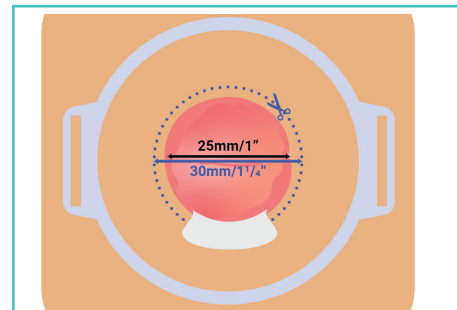
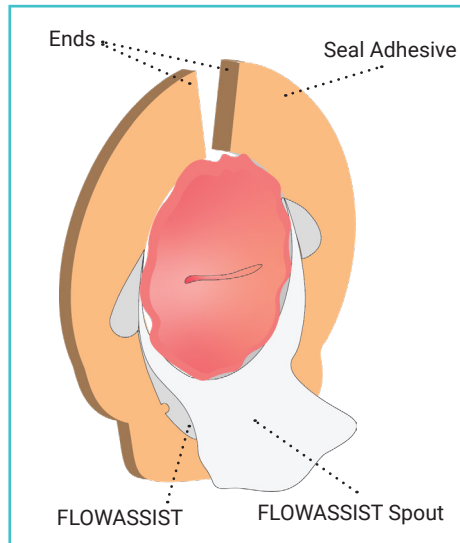


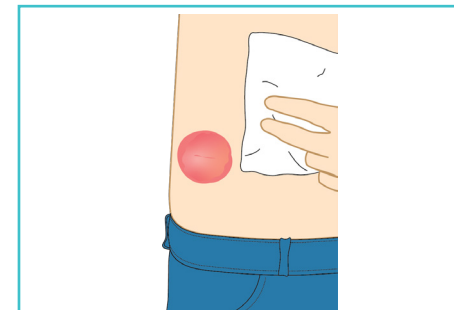


APPLICATION GUIDE



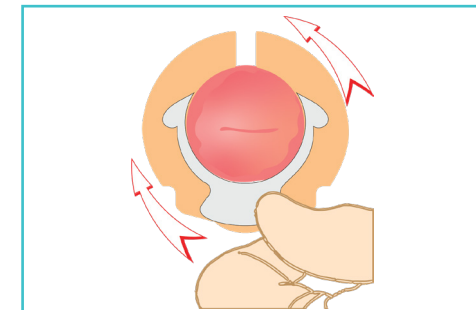
Step 1

Cut the pouch opening (1-piece pouch or 2-piece pouching system) to your stoma size + 5mm / ¼ inch in diameter, to accommodate FLOWASSIST. e.g. for a 25mm stoma, cut the pouch opening to 30mm. Everyone's stoma is unique, and some alterations may be required.



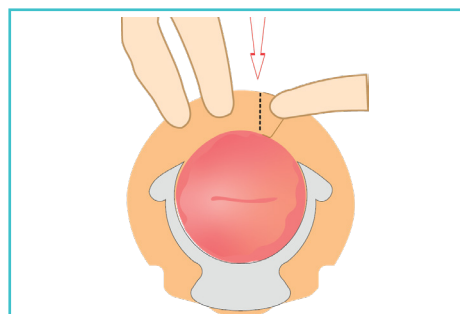
Step 2

Wash hands and ensure the skin around your stoma is clean and dry before fitting the Ostoform Seal. Remove the Seal from its packaging. Warm the Seal in your hand for 30 seconds and remove the paper liners.



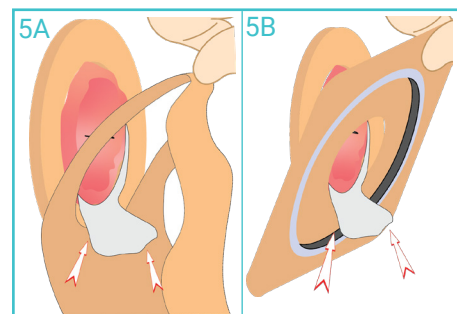
Step 3

Position the FLOWASSIST spout below the stoma or rotate to align with the opening of the stoma. You can hold the spout to help position the Seal.



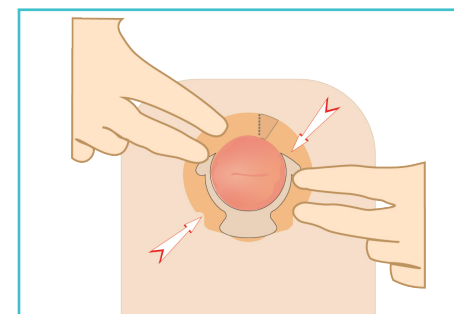
Step 4

Wrap the ends of the Seal adhesive around the stoma ensuring the ends overlap.



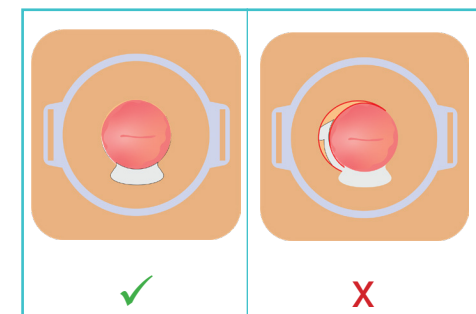
Step 5A & 5B

Ensure the FLOWASSIST spout is fully inside the pouch opening, then pull the 1-piece pouch (see figure 5A) or the 2-piece pouching system (see figure 5B) up underneath the spout, as far as it will go.



Step 6

Apply light pressure to the pouch to achieve secure adhesion.



NOTE

Visual Inspection: If possible, check that no part of the Seal adhesive is visible. You should only see the FLOWASSIST spout, if you notice that an area of the Seal adhesive is exposed, try to adjust the pouch to cover this area.