

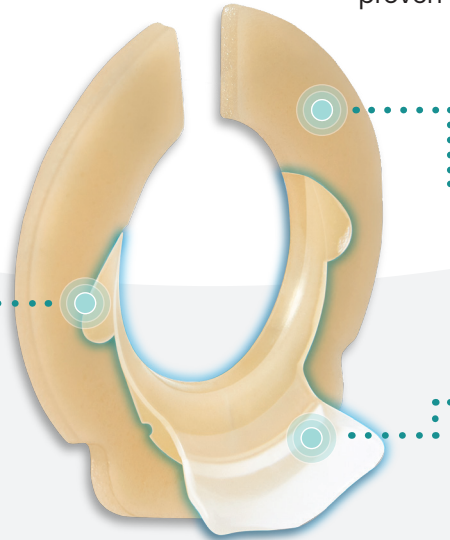


The Ostoform Seal features the patented non-absorbent component "**FLOWASSIST**" that protects the adhesive from excessive absorption and erosion. Its unique spout reduces the risk of leaks by directing output into the pouch, which can result in longer wear time and is clinically proven to reduce skin complications.

HOW DOES IT WORK?

FLOWASSIST

- Non-absorbent FLOWASSIST shields the skin and Seal adhesive from exposure to stoma output.
- Prevents breakdown of hydrocolloid so the Seal lasts longer.
- Helps prevent leakage and prolongs adhesive performance.



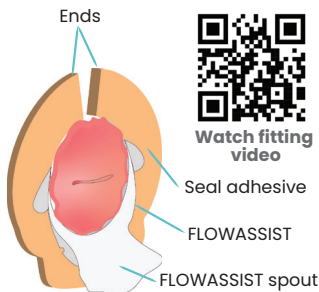
Moldable Hydrocolloid

- Skin-friendly, longer lasting material.
- Can mold and shape for optimal fit.
- Split ring enables an accurate, secure fit.

FLOWASSIST Spout

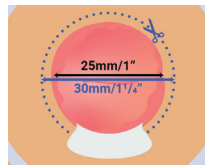
- Soft, flexible FLOWASSIST spout directs output away from the skin and into the pouch.
- Ostoform Seal can be rotated and positioned for the spout to align with individual stoma openings.

APPLICATION GUIDE



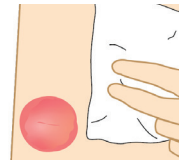
Watch fitting video

1



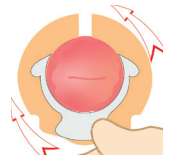
Cut the pouch opening (1-piece pouch or 2-piece pouching system) to your stoma size + 5mm / ¼ inch in diameter, to accommodate FLOWASSIST. e.g. for a 25mm stoma, cut the pouch opening to 30mm. Everyone's stoma is unique, and some alterations may be required.

2



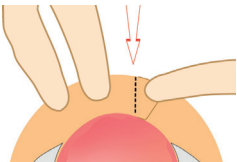
Wash hands and ensure the skin around your stoma is clean and dry before fitting the Ostoform Seal. Remove the Seal from its packaging. Warm the Seal in your hand for 30 seconds and remove the paper liners.

3



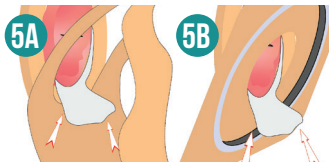
Position the FLOWASSIST spout below the stoma or rotate to align with the opening of the stoma. You can hold the spout to help position the Seal.

4



Wrap the ends of the Seal adhesive around the stoma ensuring the ends overlap.

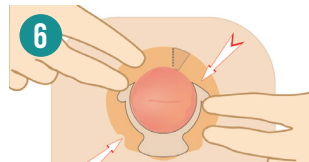
5A



Ensure the FLOWASSIST spout is fully inside the pouch opening, then pull the 1-piece pouch (see figure 5A) or the 2-piece pouching system (see figure 5B) up underneath the spout, as far as it will go.

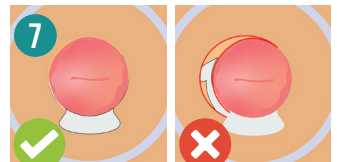
5B

6



Apply light pressure to the pouch to achieve secure adhesion.

7



Visual Inspection: If possible, check that no part of the Seal adhesive is visible. You should only see the FLOWASSIST spout, if you notice that an area of the Seal adhesive is exposed, try to adjust the pouch to cover this area.

WHO IS THIS PRODUCT FOR?

For ostomy pouch users who:

- ✓ Experience leakage
- ✓ Suffer from peristomal skin complications
- ✓ Have flush, shallow or retracted stomas
- ✓ Have high-output, fluidic stomas
- ✓ Require extended wear time
- ✓ Need an alternative to a hard convex pouch
- ✓ Have a stoma opening that is not centered

CLINICALLY PROVEN

A robust health economic argument has been conducted by the Fraunhofer Institute in Germany. This report was based on clinical trials, bench testing, a patient survey, and clinician interviews. The results presented were that by using the Ostoform Seal "an extension of wear time was to be expected, resulting in lower material consumption", saving costs to both the patient and the healthcare system.

Dr. Agnes Vosen A, Brinkmann C, Michler C. (March 2022) Estimation of the impact of FLOWASSIST on healthcare costs; Report generated by Fraunhofer IMW

Four clinical studies have been completed for the Ostoform Seal, all demonstrating improvements in skin condition. These studies have been published in prestigious peer-reviewed ostomy journals.

Results from a recent case study presented at WOCNext 2022 demonstrated longer wear time and positive clinical outcomes.

Read More:

<https://ostofrom.com/healthcare-professionals/clinical-resources/>

Ostoform has been a game-changer for every patient I have tried it on. I keep it in stock at the hospital now. I have shared this Product with our local WOC community because I have been so impressed with the outcomes!

Lisa, USA

High liquid volume is a big problem for me as this can have me changing even twice a day. When I experimented with the Ostoform Seal, I no longer had the fear of liquid making its way beneath the baseplate as FLOWASSIST helps direct it away and does not let it puddle and leak around the stoma.

Phoebe, USA

Absolutely the best product I have used in 22 years of having an Ileostomy. It is the first time I have experienced total comfort and complete confidence; no leaking or excoriated skin around the stoma.

Aideen, Ireland

FAQ

Q Is the Ostoform Seal compatible with both 1- and 2-piece appliances, and all brands?	Yes.																
Q Is the Ostoform Seal compatible with convex appliances?	Yes, the Ostoform Seal is compatible with flat and convex appliances.																
Q Can the Ostoform Seal last longer than current regular seals?	Yes. Because the non-absorbent spout protects the seal, it can last longer than regular seals.																
Q What is the FLOWASSIST Spout made of?	The FLOWASSIST component is a soft and flexible non-absorbent polymer.																
Q Is the Ostoform Seal moldable?	Yes, the Ostoform Seal is moldable.																
Q I am based in the USA. What is the HCPCS code for the Ostoform Seal?	A4385																
Q What sizes are available, and what is the SKU and qty per box?	<table border="1"> <thead> <tr> <th>Description</th> <th>Stoma Size</th> <th>SKU</th> <th>Qty per box</th> </tr> </thead> <tbody> <tr> <td>Ostoform Seal Small</td> <td>(15-23mm) (½" - 1")</td> <td>(OFA-S)</td> <td>(10/bx)</td> </tr> <tr> <td>Ostoform Seal Medium</td> <td>(23-30mm) (1" - 1¼")</td> <td>(OFA-M)</td> <td>(10/bx)</td> </tr> <tr> <td>Ostoform Seal Large</td> <td>(30-40mm) (1¼" - 1½")</td> <td>(OFA-L)</td> <td>(10/bx)</td> </tr> </tbody> </table>	Description	Stoma Size	SKU	Qty per box	Ostoform Seal Small	(15-23mm) (½" - 1")	(OFA-S)	(10/bx)	Ostoform Seal Medium	(23-30mm) (1" - 1¼")	(OFA-M)	(10/bx)	Ostoform Seal Large	(30-40mm) (1¼" - 1½")	(OFA-L)	(10/bx)
Description	Stoma Size	SKU	Qty per box														
Ostoform Seal Small	(15-23mm) (½" - 1")	(OFA-S)	(10/bx)														
Ostoform Seal Medium	(23-30mm) (1" - 1¼")	(OFA-M)	(10/bx)														
Ostoform Seal Large	(30-40mm) (1¼" - 1½")	(OFA-L)	(10/bx)														

NEED HELP?

If you have any questions, don't hesitate to contact Ostoform's sales team:
info@ostofrom.com



www.ostofrom.com