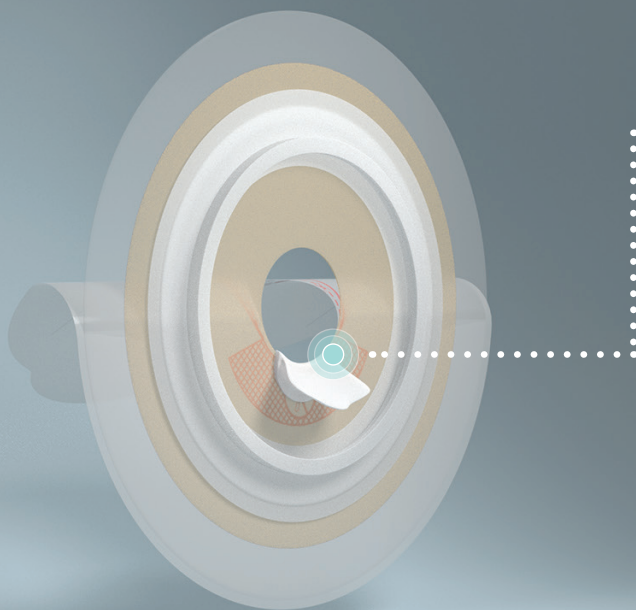


FLOWASSIST 2-Piece Pouch

Ostoform has successfully integrated its patented FLOWASSIST technology into a 2-piece ostomy pouching system.

FLOWASSIST protects the baseplate from excessive absorption and erosion, while its spout guides output into the pouch to help prevent leakage and provide enhanced skin protection.

HOW IT WORKS



Baseplate available in Flat design
Convex design coming soon

Non-absorbent **FLOWASSIST** shields the skin and baseplate adhesive from exposure to stoma output.

Soft, flexible **FLOWASSIST** spout directs output away from the skin and into the pouch.

Baseplate can be rotated and positioned for the spout to align with individual stoma openings.

BENEFITS OF FLOWASSIST



✓ Enhanced Leakage Protection

✓ Hydrocolloid Protection for Extended Wear Time

✓ Improved Skin Health

✓ Premium Security and Comfort

FLOWASSIST is designed to prevent skin irritation for all stoma types.

Floating Flange

Helps prevent additional pressure on the abdominal wall when attaching the pouch.

Protective Top Film

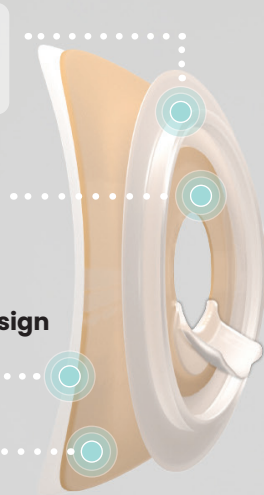
Protects the baseplate and hydrocolloid from excessive absorption and erosion.

Unique Highly-Flexible Design

Offers a secure fit for individual body shapes.

Hydrocolloid

Provides durable skin protection around the stoma.

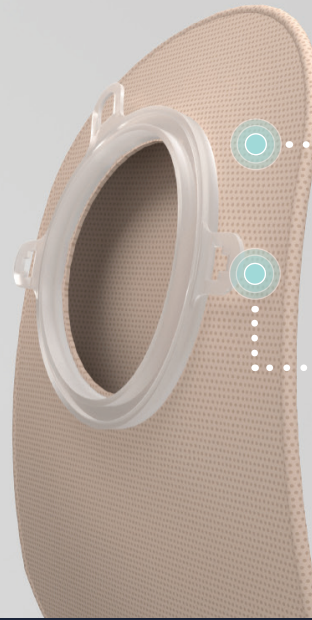


Polyethylene Fleece

Soft, fast-drying material which prevents electrostatic build up from clothing and skin.

Belt Attachment Tabs

Allow easy attachment of ostomy support belts.



AVAILABLE IN



DRAINABLE



UROSTOMY



CLOSED

All pouches are equipped with "Window" technology.

Closed pouches are fitted with an activated carbon filter that deodorizes gases and allows them to escape unobstructed.

Drainable pouches are equipped with Moisture Protect Composition (MPC) filter technology, an additional protective layer that protects the activated carbon filter against liquid absorption.

SIZING TABLE

Description	SIZE	SKU	Stoma Size (mm)	Stoma Size (inches)
Ostoform FLOWASSIST Flat Baseplate	SMALL	OFA-FB57-S	19-25 mm	¾ - 1"
	MEDIUM	OFA-FB57-M	25-32 mm	1 - 1 ¼"
	LARGE	OFA-FB57-L	32-38 mm	1 ¼ - 1 ½"
Ostoform FLOWASSIST Convex Baseplate	SMALL	OFA-CB57-S	19-25 mm	¾ - 1"
	MEDIUM	OFA-CB57-M	25-32 mm	1 - 1 ¼"
	LARGE	OFA-CB57-L	32-38 mm	1 ¼ - 1 ½"
Ostoform FLOWASSIST Drainable Pouch	•	OFA-DP57	•	•
Ostoform FLOWASSIST Urostomy Pouch	•	OFA-UP57	•	•
Ostoform FLOWASSIST Closed Pouch	•	OFA-CP57	•	•
Ostoform Belt	120cm	OFA-OB-120	•	•



Watch Fitting Video

INTERESTED IN OUR NEW PRODUCT?

Contact Ostoform's sales team

e: info@ostofrom.com

OFLS17#2



www.ostofrom.com