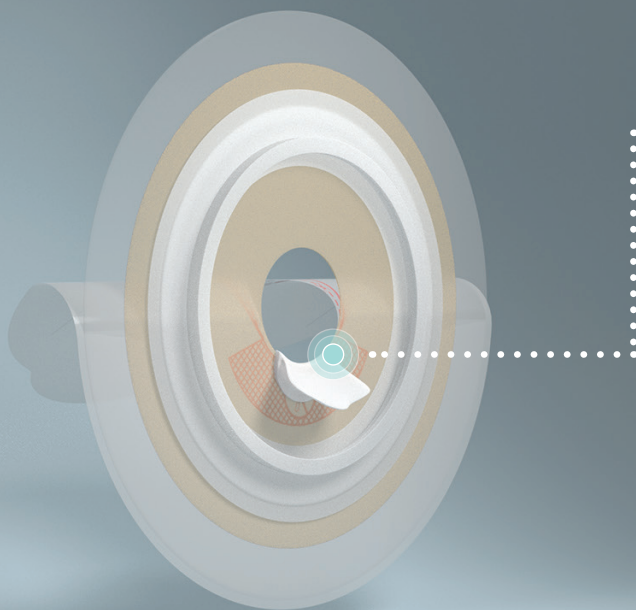


FLOWASSIST 2-Piece Pouch

Ostoform has successfully integrated its patented FLOWASSIST technology into a 2-piece ostomy pouching system.

FLOWASSIST protects the baseplate from excessive absorption and erosion, while its spout guides output into the pouch to help prevent leakage and provide enhanced skin protection.

HOW IT WORKS



Non-absorbent **FLOWASSIST** shields the skin and baseplate adhesive from exposure to stoma output.

Soft, flexible **FLOWASSIST** spout directs output away from the skin and into the pouch.

Baseplate can be rotated and positioned for the spout to align with individual stoma openings.

Baseplate available in Flat design
Convex design coming soon

BENEFITS OF FLOWASSIST



✓ Enhanced Leakage Protection

✓ Hydrocolloid Protection for Extended Wear Time

✓ Improved Skin Health

✓ Premium Security and Comfort

FLOWASSIST is designed to prevent skin irritation for all stoma types.

Floating Flange

Helps prevent additional pressure on the abdominal wall when attaching the pouch.

Protective Top Film

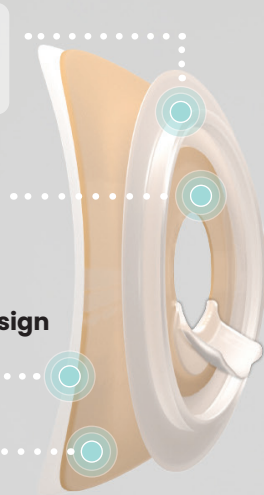
Protects the baseplate and hydrocolloid from excessive absorption and erosion.

Unique Highly-Flexible Design

Offers a secure fit for individual body shapes.

Hydrocolloid

Provides durable skin protection around the stoma.

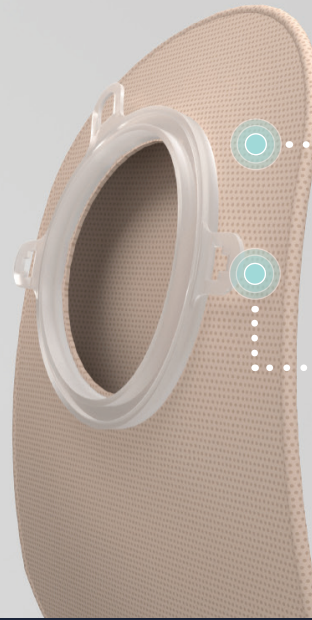


Polyethylene Fleece

Soft, fast-drying material which prevents electrostatic build up from clothing and skin.

Belt Attachment Tabs

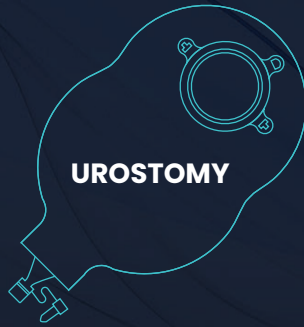
Allow easy attachment of ostomy support belts.



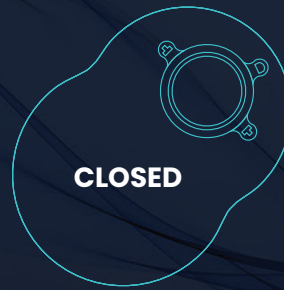
AVAILABLE IN



DRAINABLE



UROSTOMY



CLOSED

All pouches are equipped with "Window" technology.

Closed pouches are fitted with an activated carbon filter that deodorizes gases and allows them to escape unobstructed.

Drainable pouches are equipped with Moisture Protect Composition (MPC) filter technology, an additional protective layer that protects the activated carbon filter against liquid absorption.

SIZING TABLE

HCPCS Code	Description	SIZE	SKU	Stoma Size (mm)	Stoma Size (inches)
A4410	Ostoform FLOWASSIST Flat Baseplate	SMALL	OFA-FB57-S	19-25 mm	¾ - 1"
		MEDIUM	OFA-FB57-M	25-32 mm	1 - 1 ¼"
		LARGE	OFA-FB57-L	32-38 mm	1 ¼ - 1 ½"
A4408	Ostoform FLOWASSIST Convex Baseplate	SMALL	OFA-CB57-S	19-25 mm	¾ - 1"
		MEDIUM	OFA-CB57-M	25-32 mm	1 - 1 ¼"
		LARGE	OFA-CB57-L	32-38 mm	1 ¼ - 1 ½"
A4425	Ostoform FLOWASSIST Drainable Pouch	•	OFA-DP57	•	•
A4432	Ostoform FLOWASSIST Urostomy Pouch	•	OFA-UP57	•	•
A4419	Ostoform FLOWASSIST Closed Pouch	•	OFA-CP57	•	•
A4367	Ostoform Belt	120cm	OFA-OB-120	•	•



Watch Fitting Video

INTERESTED IN OUR NEW PRODUCT?

Contact Ostoform's sales team

e: info@ostofrom.com

OFLS17US#2



www.ostofrom.com