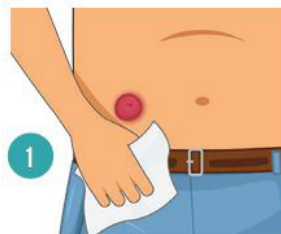
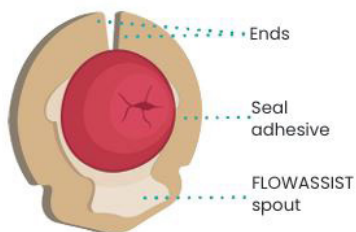


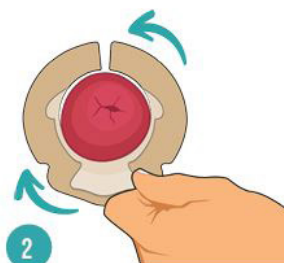
## Watch Fitting Video



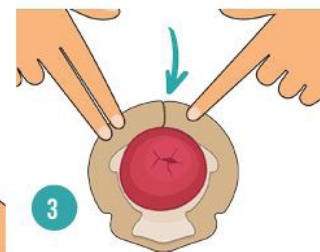
### APPLICATION GUIDE



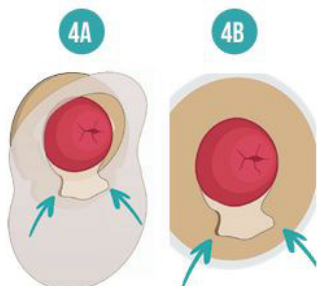
**1** Wash your hands and ensure the skin around your stoma is clean and dry. Warm the Seal in your hands for 30 seconds and remove the paper liners.



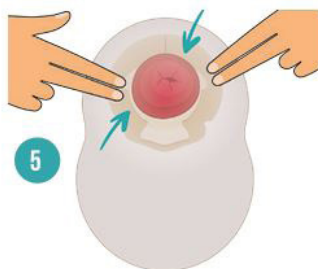
**2** Position the FLOWASSIST spout below the stoma or rotate to align with the opening of the stoma. You can hold the spout to help position the Seal.



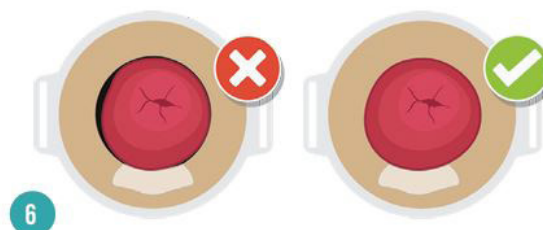
**3** Wrap the ends of the Seal adhesive around the stoma ensuring the ends overlap.



**4A** **4B**  
Prepare the pouch opening as per manufacturer guidelines. Ensure the FLOWASSIST spout is fully inside the pouch opening, then pull the 1-piece pouch (see figure 4A) or the 2-piece pouching system (see figure 4B) up underneath the spout, as far as it will go.



**5** Apply light pressure to the pouch to achieve secure adhesion.



**6** If possible, check that no part of the Seal adhesive is visible. If you notice that an area of the Seal adhesive is exposed, try to adjust the pouch to cover this area.