



Begin with Confidence. Start with **FLOWASSIST**.



Improved Usability
No additional cutting to the pouch is required



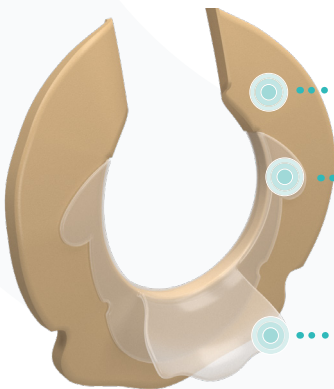
Enhanced Product Performance



More Discreet
Seal thickness reduced to 2mm

HOW IT WORKS

FLOWASSIST, a flexible non-absorbent component, shields the skin and adhesive from excessive absorption and erosion. The FLOWASSIST spout directs output into the pouch to **help prevent leakage** and **provide enhanced skin protection**.



Split Moldable Hydrocolloid

Split ring can mold and shape for an accurate, secure fit.

FLOWASSIST

Non-absorbent component shields the skin and adhesive from excessive absorption and erosion.

FLOWASSIST Spout

Directs output away from the skin and into the pouch.

BENEFITS OF FLOWASSIST



- ✓ Enhanced Leakage Protection
- ✓ Hydrocolloid Protection for Extended Wear Time
- ✓ Improved Skin Health
- ✓ Premium Security and Comfort

FLOWASSIST is designed to prevent skin irritation for all stoma types.

Proven Efficacy in Peristomal Care



Read Clinical Studies

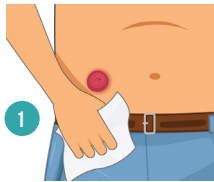
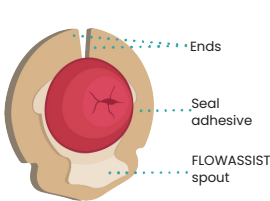
FLOWASSIST clinical studies consistently reveal significant improvements in **peristomal skin health**, **prolonged wear time**, and **positive user experiences**.



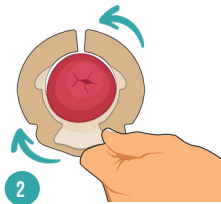
"The FLOWASSIST Seal has been a **game-changer** for every patient I have tried it on. I keep it in stock at the hospital now."

Lisa, WOC Nurse, USA

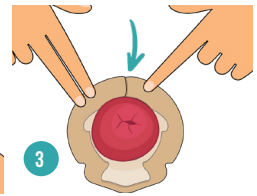
APPLICATION GUIDE



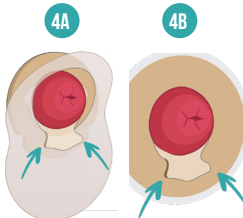
1 Wash your hands and ensure the skin around your stoma is clean and dry. Warm the Seal in your hands for 30 seconds and remove the paper liners.



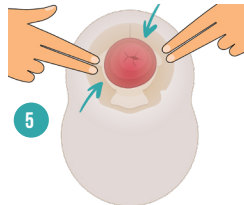
2 Position the FLOWASSIST spout below the stoma or rotate to align with the opening of the stoma. You can hold the spout to help position the Seal.



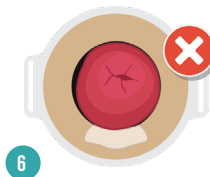
3 Wrap the ends of the Seal adhesive around the stoma ensuring the ends overlap.



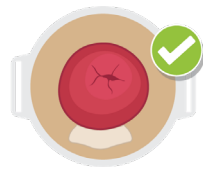
Prepare the pouch opening as per manufacturer guidelines. Ensure the FLOWASSIST spout is fully inside the pouch opening, then pull the 1-piece pouch (see figure 4A) or the 2-piece pouching system (see figure 4B) up underneath the spout, as far as it will go.



5 Apply light pressure to the pouch to achieve secure adhesion.



6 If possible, check that no part of the Seal adhesive is visible. If you notice that an area of the Seal adhesive is exposed, try to adjust the pouch to cover this area.



Watch fitting video

Product Size	SKU	Stoma Size (mm)	Stoma Size (inches)
Small	OFA - S	15 - 23mm	½" - 1"
Medium	OFA - M	23 - 30mm	1" - 1¼"
Large	OFA - L	30 - 40mm	1¼" - 1½"

NEED HELP?

OFLS16#2

If you have any questions, don't hesitate to contact Ostoform's sales team:

info@ostofrom.com



www.ostofrom.com