

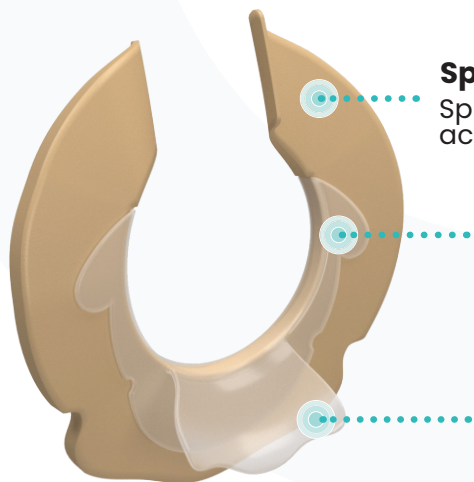


Begin with Confidence.
Start with **FLOWASSIST**.



HOW IT WORKS

FLOWASSIST, a flexible non-absorbent component, shields the skin and adhesive from excessive absorption and erosion. The FLOWASSIST spout directs output into the pouch to **help prevent leakage** and **provide enhanced skin protection**.



Split Moldable Hydrocolloid

Split ring can mold and shape for an accurate, secure fit.

FLOWASSIST

Non-absorbent component shields the skin and adhesive from excessive absorption and erosion.

FLOWASSIST Spout

Directs output away from the skin and into the pouch.

BENEFITS OF FLOWASSIST



- ✓ Enhanced Leakage Protection
- ✓ Improved Skin Health
- ✓ Hydrocolloid Protection for Extended Wear Time
- ✓ Premium Security and Comfort

FLOWASSIST is designed to help prevent skin irritation across all stoma types, with the best results observed in patients with fluidic stomas.

Proven Efficacy in Peristomal Care

FLOWASSIST clinical studies consistently reveal significant improvements in **peristomal skin health**, **prolonged wear time**, and **positive user experiences**.



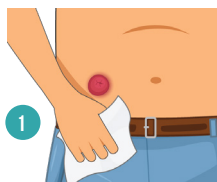
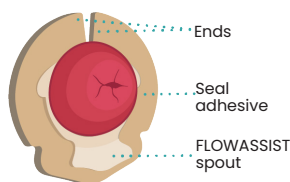
Read Clinical Studies



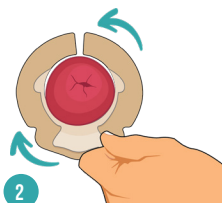
"The FLOWASSIST Seal has been a **game-changer** for every patient I have tried it on. I keep it in stock at the hospital now."

Lisa, WOC Nurse, USA

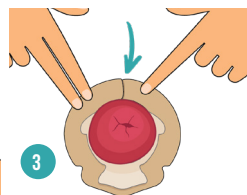
APPLICATION GUIDE



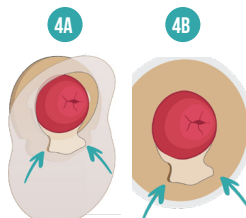
Wash your hands and ensure the skin around your stoma is clean and dry. Warm the Seal in your hands for 30 seconds and remove the paper liners.



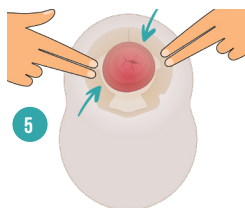
Position the FLOWASSIST spout below the stoma or rotate to align with the opening of the stoma. You can hold the spout to help position the Seal.



Wrap the ends of the Seal adhesive around the stoma ensuring the ends overlap.



Prepare the pouch opening as per manufacturer guidelines. Ensure the FLOWASSIST spout is fully inside the pouch opening, then pull the 1-piece pouch (see figure 4A) or the 2-piece pouching system (see figure 4B) up underneath the spout, as far as it will go.



Apply light pressure to the pouch to achieve secure adhesion.



If possible, check that no part of the Seal adhesive is visible. If you notice that an area of the Seal adhesive is exposed, try to adjust the pouch to cover this area.



Watch fitting video

Description	Stoma Size	SKU
FLOWASSIST Seal Small	15 - 23mm / ($\frac{1}{2}$ " - 1")	OFA-S
FLOWASSIST Seal Medium	23 - 30mm / (1" - $1\frac{1}{4}$ ")	OFA-M
FLOWASSIST Seal Large	30 - 40mm / ($1\frac{1}{4}$ " - $1\frac{1}{2}$ ")	OFA-L

NEED HELP?

If you have any questions, don't hesitate to contact Ostoform's sales team:

sales@ostoform.com



www.ostoform.com